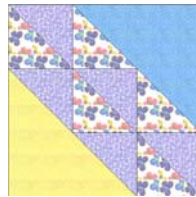


Block 11:
Flying Geese in the Middle



NOTE: Because this is a quilt made with a number of lovely-colored fabrics, we are giving you the basic color for each block, but please use your creativity with the fabrics in the kit to create your own, unique style with your blocks. Additionally, our cutting chart for the Baby Quilt will be for the "Udder Cowboy" fabrics and our cutting chart for the Twin Quilt will be the "Butterfly Fling" fabrics. Use your imagination!

All Seams 1/4"
Finished Baby Quilt = 36" x 45"
Finished Block for Baby Quilt = 9"
Unfinished Block for Baby Quilt = 9 1/2"

Finished Twin Quilt = 63" x 81"
Finished Block for Twin Quilt = 18"
Unfinished Block for Twin Quilt = 18 1/2"

Fabric: "Udder Cowboy" from Sew Treasured for Moda Fabrics
or
"Butterfly Fling" from Me & My Sister for Moda Fabrics

Press in the direction of the arrows.

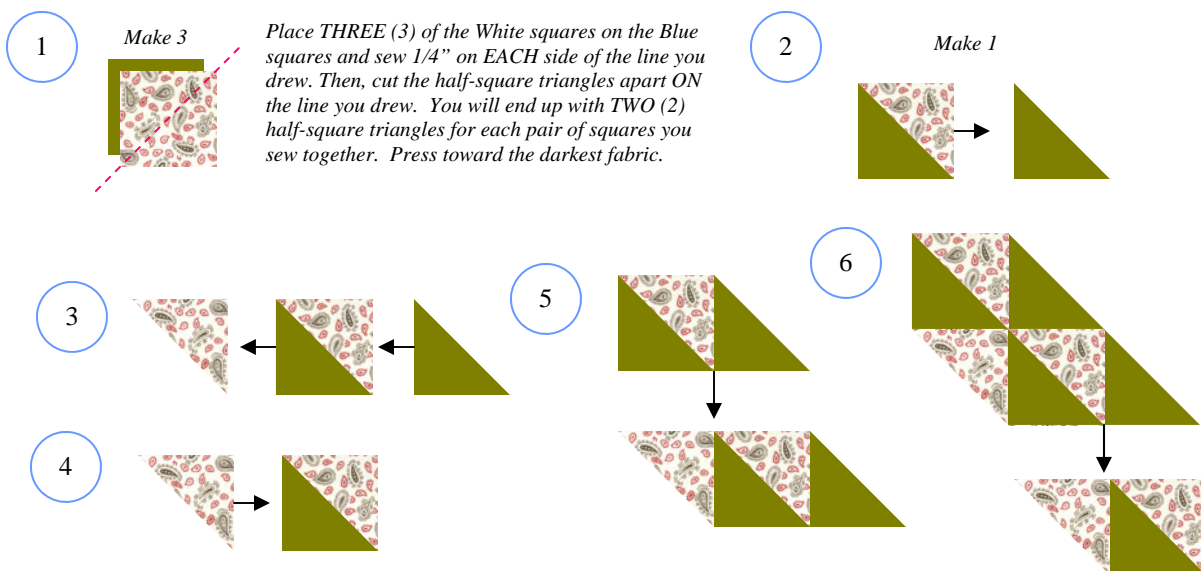
Baby Quilt (9" blocks)

Fabric	Cut
Tan	ONE (1) 6 7/8" square
White	THREE (3) 3 7/8" squares
Green	THREE (3) 3 7/8" squares
Blue	ONE (1) 6 7/8" square

Twin Quilt (18" blocks)

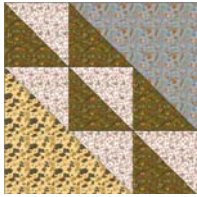
Fabric	Cut
Yellow	ONE (1) 12 7/8" square
White	THREE (3) 6 7/8" squares
Purple	THREE (3) 6 7/8" squares
Blue	ONE (1) 12 7/8" square

- Draw a line on TWO (2) of the back of the White 3 7/8" squares diagonally, corner-to-corner, ONE (1) time.
- Cut the remaining White and Green squares ONE (1) time diagonally, corner-to-corner.
- Cut the Tan and Blue squares ONE (1) time diagonally, corner-to-corner. You only need ONE (1) of these triangles for this block.

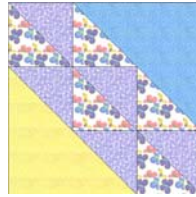


"Pioneer Sampler" 2009 BOM Quilt

An Original Quilt Designed by TK Harrison, BOMquilts.com
 Brought to you by BOMquilts.com and AbbiMays.com



**Block 11:
 Flying
 Geese in
 the Middle**



NOTE: Because this is a quilt made with a number of lovely-colored fabrics, we are giving you the basic color for each block, but please use your creativity with the fabrics in the kit to create your own, unique style with your blocks. Additionally, our cutting chart for the Baby Quilt will be for the "Udder Cowboy" fabrics and our cutting chart for the Twin Quilt will be the "Butterfly Fling" fabrics. Use your imagination!

All Seams 1/4"
Finished Baby Quilt = 36" x 45"
Finished Block for Baby Quilt = 9"
Unfinished Block for Baby Quilt = 9 1/2"

Finished Twin Quilt = 63" x 81"
Finished Block for Twin Quilt = 18"
Unfinished Block for Twin Quilt = 18 1/2"

Fabric: "Udder Cowboy" from Sew Treasured for Moda Fabrics
or
"Butterfly Fling" from Me & My Sister for Moda Fabrics

Press in the direction of the arrows.

