



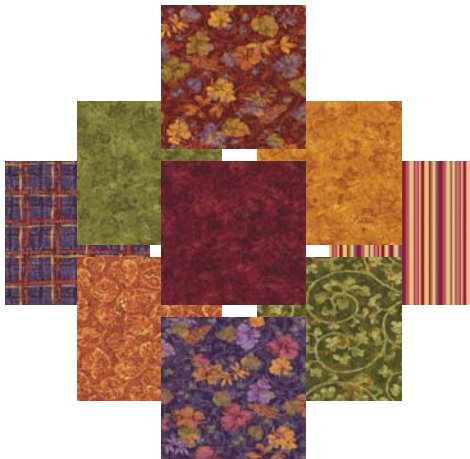
Let's make it easy and SEW this fun Churn Dash nine-patch, creating beauty from the basics! www.BOMquilts.com!

All Seams 1/4"
Finished Quilt = 60" x 77 1/2"
Finished Block for Quilt = 15"
Unfinished Block for Quilt = 15 1/2"

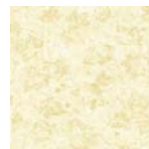
Fabric: "Bittersweet" Designed by Nancy Halvorsen from Benartex

Purchase the Kit from www.AbbiMays.com

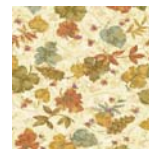
"Bittersweet" Fabric Requirements for Quilt Top



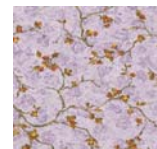
22 "Bittersweet" fat quarter cuts -
leftover fabric to be used for scrappy
binding.



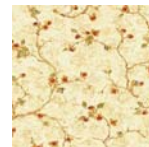
1/2 yard



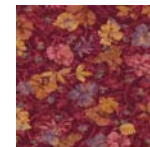
1/2 yard



1/2 yard
for blocks
and
sashing



1 yard for
blocks and
sashing



2 yards for
blocks and
borders

Retrieve your "Bittersweet Churning" 2012 Block of the Month free quilt project from BOMquilts.com and quilt fabric kit from www.AbbiMays.com - the online quilt fabric shop that's ALWAYS open!