



**“Pendleton Inspired”
2013 BOM Quilt**

An Original Quilt Designed by TK Harrison, BOMquilts.com
Brought to you by BOMquilts.com, AbbiMays.com & Aurifil Thread



This is a raw-edge applique quilt, or an applique of your preference quilt. It is very geometrical and totally inspired by the Pendleton blankets from the Pendleton Woolen Mills in Pendleton, Oregon. www.BOMquilts.com!

**All Seams 1/4”
Finished Quilt = 66” x 83”
Finished Block for Quilt = 15”
Unfinished Block for Quilt = 15 1/2”**

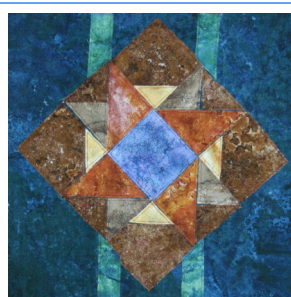
**Fabric: “Marblehead” Designed by Paintbrush Studio for Moda
Purchase the Kit from www.AbbiMays.com
Purchase Aurifil Thread from Aurifil**

This is an applique quilt. You can do raw-edge applique, fusible web applique, needle turn applique or any applique technique you prefer. The templates show the seam allowances so if you want to use raw-edge applique or fusible web applique, please cut on the template lines and not on the seam allowance lines.



*Pendleton Inspired
Block #12*

Cutting for Block #12:	
Blue (background)	Cut ONE (1) 15 1/2” square (you can also piece together the background from that leftover from the previous blocks)
Blue	Cut ONE (1) #G from the attached templates
Orange	Cut FOUR (4) #H’s from the attached templates
Yellow	Cut FOUR (4) #I’s from the attached templates
Brown	Cut FOUR (4) #C’s from the attached templates
Tan	Cut FOUR (4) #F’s and cut FOUR (4) #C’s from the attached templates
Green	Cut TWO (2) #B’s and TWO (2) #D’s from the attached templates
Fusible Web	OPTIONAL for securing the appliquéd templates to the background fabric



*“Pendleton Inspired”
Finished Block
Block #12*

**Using the image on the attached templates,
place your pieces on your background and
stitch them into place or secure them with
your applique preference.**

Download your “Pendleton Inspired” 2013 Block of the Month free quilt project from www.BOMquilts.com, quilt fabric kit from www.AbbiMays.com and Aurifil thread from Aurifil!

