



“Pendleton Inspired” 2013 BOM Quilt

An Original Quilt Designed by TK Harrison, BOMquilts.com
Brought to you by BOMquilts.com, AbbiMays.com & Aurifil Thread

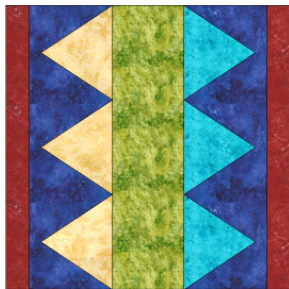


This is a raw-edge applique quilt, or an applique of your preference quilt. It is very geometrical and totally inspired by the Pendleton blankets from the Pendleton Woolen Mills in Pendleton, Oregon. www.BOMquilts.com!

**All Seams 1/4”
Finished Quilt = 66” x 83”
Finished Block for Quilt = 15”
Unfinished Block for Quilt = 15 1/2”**

**Fabric: “Marblehead” Designed by Paintbrush Studio for Moda
Purchase the Kit from www.AbbiMays.com
Purchase Aurifil Thread from Aurifil**

This is an applique quilt. You can do raw-edge applique, fusible web applique, needle turn applique or any applique technique you prefer. The templates show the seam allowances so if you want to use raw-edge applique or fusible web applique, please cut on the template lines and not on the seam allowance lines.

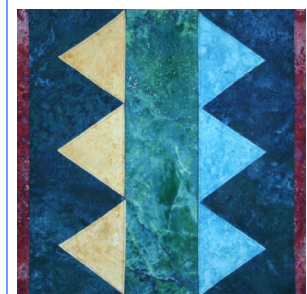


*Pendleton Inspired
Block #7*

Cutting for Block #7 (note - add a seam allowance if needed):

Blue (background)	Cut TWO (2) 5 1/4” x 15 1/2” strips
Green	Cut ONE (1) 4 1/2” x 15 1/2” strips
Maroon	Cut TWO (2) 1 1/2” strips
Yellow	Cut THREE (3) of the attached templates
Blue	Cut THREE (3) of the attached templates
Fusible Web	OPTIONAL for securing the appliquéd templates to the background fabric

**Sew the Green center to the Blue strips,
then sew the Maroon edges to the Blue/
Green Center. Center the triangle template
pieces on the center square and secure them
with your applique preference.**



*“Pendleton Inspired”
Finished Block
Block #7*

**Download your “Pendleton Inspired” 2013 Block of the Month free quilt project
from www.BOMquilts.com, quilt fabric kit from www.AbbiMays.com and Aurifil
thread from Aurifil!**

