



“Botanical Beauty”

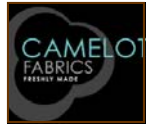
2016 Block of the Month Quilt

An Original Quilt Designed by TK Harrison from BOMquilts.com

Brought to you by BOMquilts.com, Camelot Fabrics, The Warm Company & Aurifil Thread



BOMquilts.com



Botanical Beauty
Block #6
July 20, 2016

“Botanical Beauty” features rich and luxurious fabrics with blocks designed to add a touch of whimsy with basic modern flares!

www.BOMquilts.com

Finished Quilt = 70" x 85"

Finished Blocks for Quilt = 15"

Unfinished Blocks for Quilt = 15 1/2"

Fabric: “Botanical” designed by Alisse Courter from Camelot Fabrics

Find a quilt shop who carries the “Botanical” fabric at

www.camelotfabrics.com/find-a-store

Purchase Aurifil Thread from Aurifil

Find a shop to purchase Warm & Natural batting from www.WarmCompany.com

All Seams a precise 1/4" ~ Press in the direction of the arrows.

Read ALL Instructions Before Beginning

These cutting instructions are for the “Botanical Beauty” Block #6:

Fabric	Cutting Instructions
Twig in Iron	Cut TWO (2) 2" x 9 1/2" strips
Twig in Iron	Cut TWO (2) 2" x 12 1/2" strips
White	Cut TWO (2) 2" x 12 1/2" strips
White	Cut TWO (2) 2" x 15 1/2" strips
White	Cut TWO (2) 5" squares
Damask in Charcoal	Cut FOUR (4) 3" squares. Then cut the squares with a diagonal line, corner-to-corner, ONE (1) time. You will end up with TWO (2) triangles per square
Fern in White	Cut ONE (1) 5 3/4" square. Then cut the square with a diagonal line, corner-to-corner, TWO (2) times. You will end up with FOUR (4) triangles per square.



Aurifil thread suggestions:

#6605, #6158, #6975, #6865,

#6021, #6835



Warm & Natural Batting: Full Bed Sized package

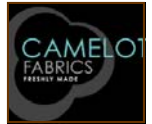


“Botanical Beauty”

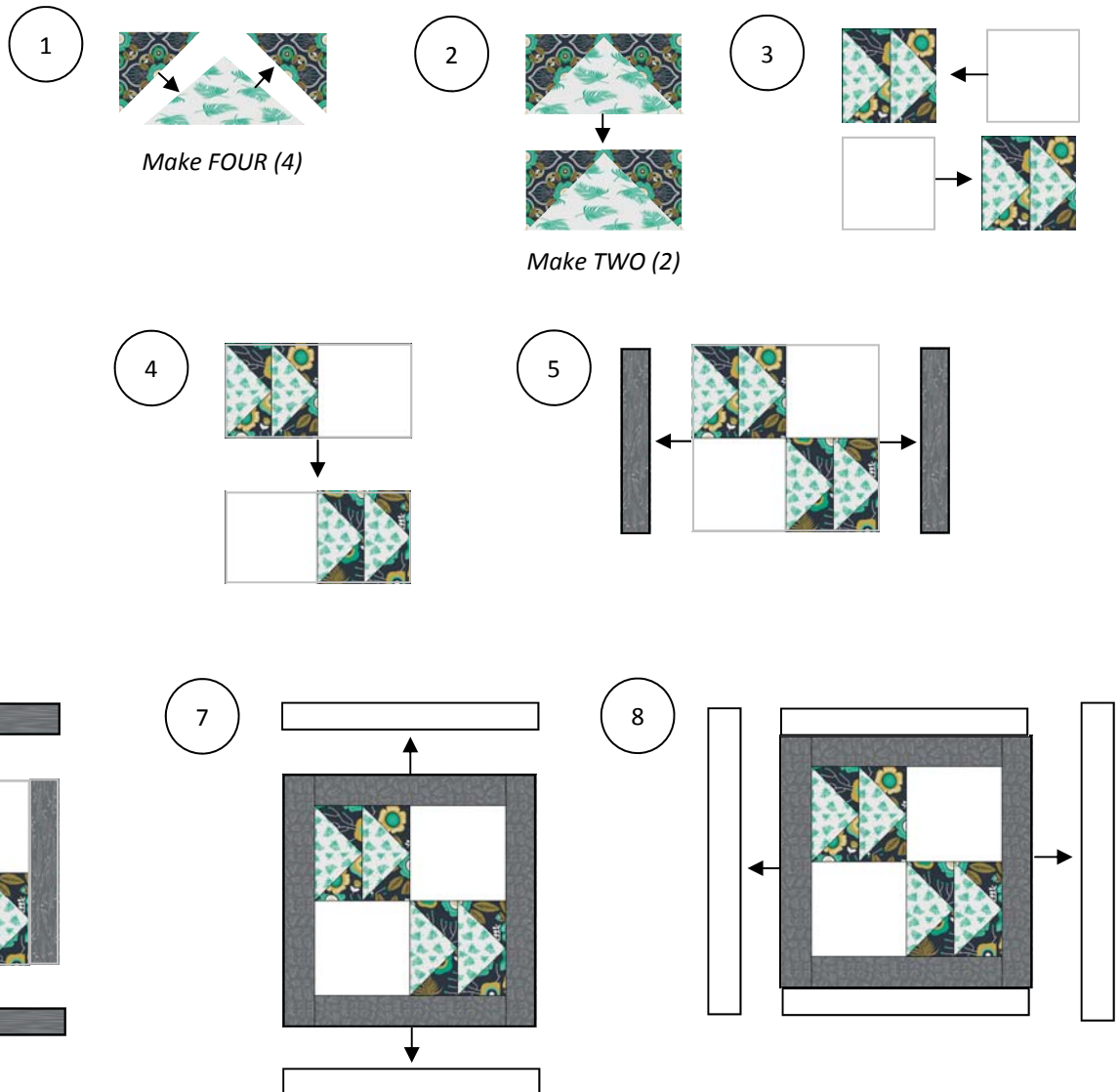
2016 Block of the Month Quilt

An Original Quilt Designed by TK Harrison from BOMquilts.com

Brought to you by BOMquilts.com, Camelot Fabrics, The Warm Company & Aurifil Thread



Botanical Beauty
Block #6
July 20, 2016



Aurifil thread suggestions:
#6605, #6158, #6975, #6865,
#6021, #6835



**Warm & Natural Batting: Full Bed
Sized package**