

FQS Spencer's Museum Memories

A Museum-Quality Quilt with an Artistic Interpretation of Traditional Pieced Blocks
2006 Row of the Month Quilt from BOMQuilts.com &
FatQuarterShop.com

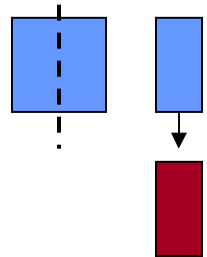
September 22, 2006 - Row 6



We are going to piece 1 row (see circled image), but be very careful as this is the final defining row of your quilt. When you are finished with this row, you will be able to shore up the rest of your rows to put them together!

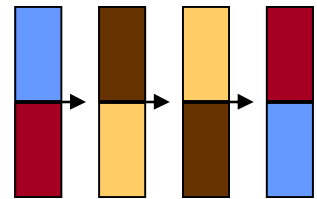
Sort your charm packs by color. You will need 8 charm squares of EACH color (i.e. red, brown, blue & yellow) for this row.

Cut each square in half, ending with two (2) $2\frac{1}{2}'' \times 5''$ strips per color. Then, sew each block together, end to end - with different colors to form a pattern for your squares. You will have eight (8) strips per color when finished.

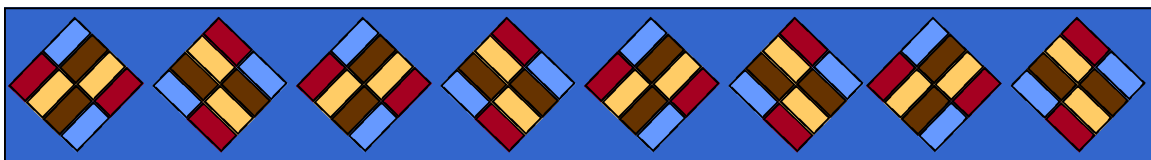
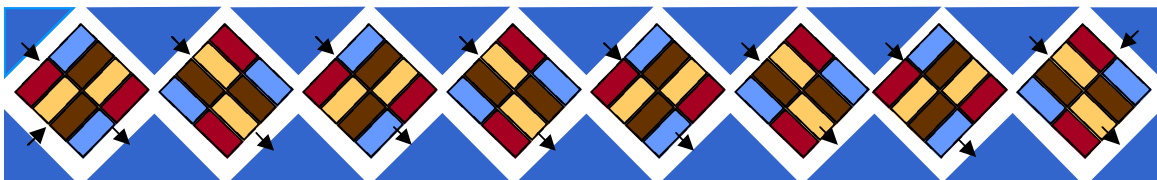


From your blue fabric (not charm squares), cut eight (8) $8\frac{7}{8}'' \times 8\frac{7}{8}''$ squares. Then, cut seven (7) of your squares diagonally so you end up with 14 triangles. From the remaining blue square, cut it diagonally, corner to corner TWICE so you end up with 4 triangles.

Sort your strips, using one color per block, you'll be making 8 blocks set on-point for this row. **Sew** your blocks with a $\frac{1}{4}''$ seam allowance, as shown, pressing all towards the same direction:



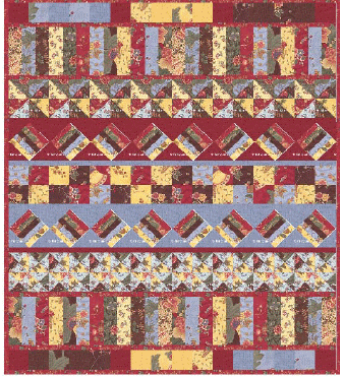
Now, sew your triangles to your blocks and finish your row (note how each block set is turned):



FQS Spencer's Museum Memories

A Museum-Quality Quilt with an Artistic Interpretation of Traditional Pieced Blocks
2006 Row of the Month Quilt from BOMQuilts.com &
FatQuarterShop.com

September 22, 2006 - Row 6



As stated earlier, rows 5 and 6 are the defining rows for your quilt. You want all of your other rows to be the same width as these rows. These two rows should be 68" wide. Due to the variations of cutting and sewing, from quilter to quilter, your row may not be exactly the same as our rows.

If your rows 1-4 are *not* the same width, then you need to make adjustments accordingly. You can add more blocks to the rows you've already created ... or you can trim these previous rows so they are the same width as rows 5 & 6. Based on the instructions that we have published, all of our rows match the instructions, with the exception of the rows from instruction set #1 - and we had to do a little trimming of the blocks (evenly, on both ends of the row) to make an even row-match.

Once your rows match, you'll need to add the sashing and binding to finish your quilt top! We used a 1 5/8" sashing between each row (1" finished, after the seams were sewn). We used the blue and red fabrics to border rows 5 & 6 (top and bottom of rows) and then we used Fabric C in between the remaining rows. Our binding is also Fabric C.

We hope you enjoyed making this "FQS Spencer's Museum Memories" row of the month quilt with us! Congratulations on finishing!