

# Prairie Flower Cakes

2008 Free BOM Appliqué Challenge Quilt Pattern from  
BOMQuilts.com & AbbiMays.com



Block 1



**Finished Quilt Size = 57" x 76"**

**Finished Block Size = 19" square**

**All Seams 1/4"**

**Fabric: Prairie Paisley from Moda**

**This is a Challenge BOM quilt** - we give you the fabric requirements and all of the appliqué patterns up front - and **we challenge you** to put together a beautiful **Prairie Flower Cakes** quilt!

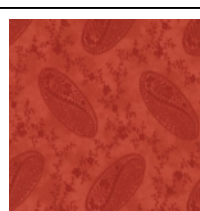
Fabric Requirements (include quilt top, flower fabrics and binding).



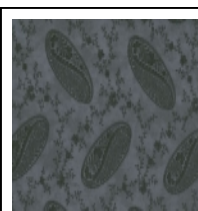
TWO (2)  
Layer Cakes



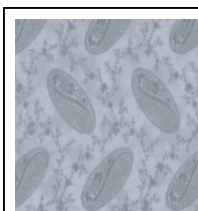
Jacquard  
Cream  
1 yard



Red Tonal  
Fat Eighth



Dk. Blue  
Tonal  
Fat Eighth



Lt. Blue  
Tonal  
Fat Eighth

**Challenge Instructions:** Sew FOUR (4) of the 10" layer cake squares together. Then, using one of the Flower appliqué templates from BOMquilts.com, appliqué the flower to the center (or wherever you want) of the block. It's that simple! The challenge is to see how much fun you can have with starting and finishing this Prairie Flower Cakes quilt!

**Purchase your "Prairie Flower Cakes" 2008 BOM Challenge quilt kit from AbbiMays.com - the online quilt shop that's ALWAYS open!**