

FQS Faded Baskets

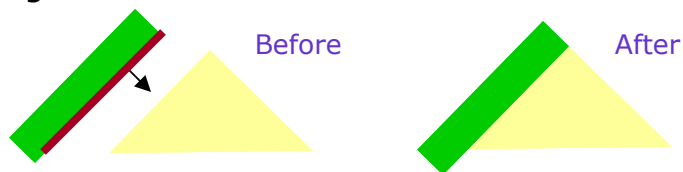
Two Blocks per Two Weeks Table Topper Quilt

2006 BOM Table Topper Quilt from BOMQuilts.com &
FatQuarterShop.com

Block Instructions Set 1 - Page 1

Piecing Your First 2 Blocks - Instructions are for 1 block, please repeat for block 2. All seam allowances 1/4" and are sewn right sides together. Always press toward red line.

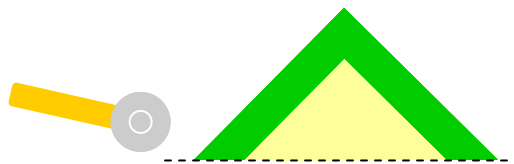
1) Sew the 9 3/4" x 2 1/4" strip of Fabric C to the left short-edge of your Fabric E triangle.



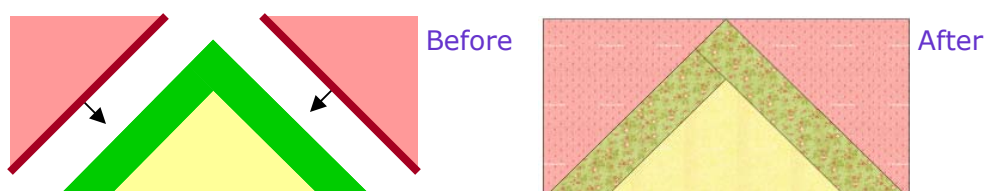
2) Sew the 11 1/4" x 2 1/4" strip of Fabric C to the opposite short-edge of your Fabric E triangle.



3) Using your rotary cutter and ruler, cut the triangle so that the edges of Fabric C are even with the edges of Fabric E.



4) Next, sew your Fabric I 8 3/8" x 8 3/8" triangles to the short edges of this triangle, as shown.



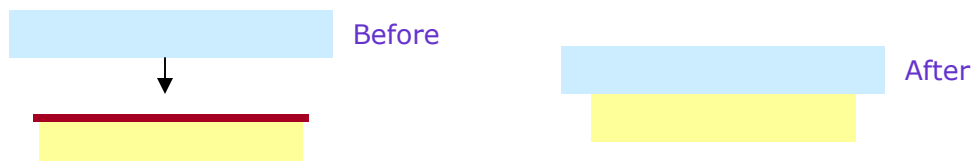
FQS Faded Baskets

Two Blocks per Two Weeks Table Topper Quilt

2006 BOM Table Topper Quilt from BOMQuilts.com &
FatQuarterShop.com

Block Instructions Set 1 - Page 2

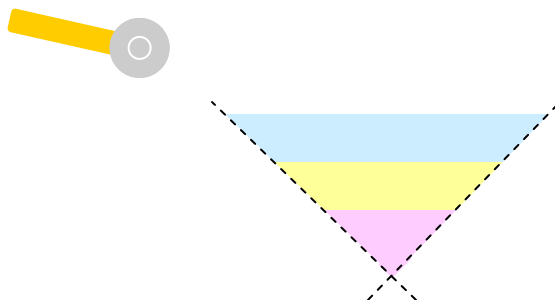
5) Line Fabric D strip up in the center of the Fabric strip A, sew together.



6) Line up the long edge of Fabric B triangle in the center of the Fabric A/D strip, sew together.



7) Using your rotary cutter and ruler, cut the triangle so that the edges of all A/D fabrics are even with the Fabric B triangle.



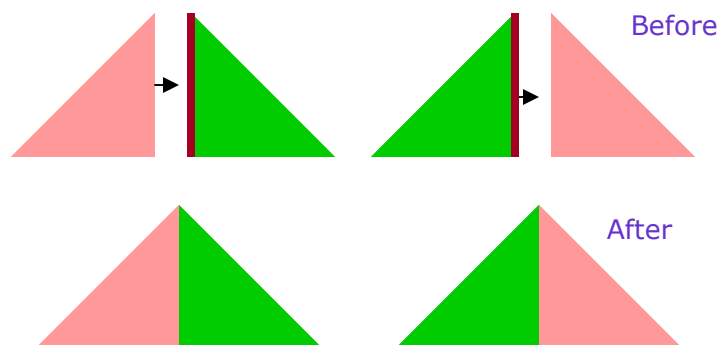
FQS Faded Baskets

Two Blocks per Two Weeks Table Topper Quilt

2006 BOM Table Topper Quilt from BOMQuilts.com &
FatQuarterShop.com

Block Instructions Set 1 - Page 3

8) Using Fabric I and Fabric C triangles, sew as shown.



9) Sew your I/C triangles to the short edges of your strip triangle as shown.



10) Finally, sew the two finished rectangles together. Block should measure 15" x 15" when complete. Remember to make TWO of these blocks!

