

"Invite a Moose to Christmas"
 2017 Free "Christmas in July" Quilt Project
 from BOMQuilts.com & AbbiMays.com



Christmas in July 2017
at BOMquilts.com!

Free original quilt patterns &
 projects each week in July!

Click Here



Introduction Page

This image shows one Block Set.

To make a table topper, make one Block Set
 (24 1/2" square before a Border and Binding)

To make a bed runner, depending on the size of the bed, make
 three or more Block Sets.

To make a lap quilt make four Block Sets.

To make a larger quilt, make the number of block sets that will
 create the size of quilt you desire.

**Featuring the "A Moose for Christmas" fabric collection designed by Cheryl Haynes
 for Benartex Fabrics.**

Fabric Requirements for ONE (1) "Invite a Moose to Christmas" Block Set	
Fabric	Cuts
Poinsettia Tossed Light Green	1/4 yard
Moose Heads Green	1/4 yard
Ornaments Gold	1/4 yard
Gingham Red	1/4 yard
Ornaments Gold	1/4 yard

Purchase additional binding and the backing for your quilt at www.AbbiMays.com!



Buy Your Fabric from AbbiMays.com!



This pattern has been tested, to the best of our ability. If your block does not come out the size shown, please try adjusting your needle position to the appropriate position (left or right) and see if you get the correct block size.

© 2017 BOMQuilts.com - All Rights Reserved
 For Personal Use ONLY

"Invite a Moose to Christmas"

2017 Free "Christmas in July" Quilt Project
from BOMQuilts.com & AbbiMays.com



Christmas in July 2017
at BOMquilts.com!

Free original quilt patterns &
projects each week in July!

Click Here



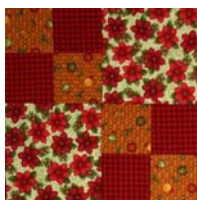
Finished Blocks = 12" square
Unfinished Blocks = 12 1/2" square

Finished Block Set = 24 1/2" square

All seams are a scant 1/4"
Press in the direction of the arrows.

Read all instructions before beginning.

See the Introduction page for the fabric requirements needed for the quilt project size of your choice.



Invite a Moose
to Christmas
Block 1

Cutting for the "Invite a Moose to Christmas" Block 1 - make TWO (2) for this Block Set:

Fabric	Cuts
Poinsettia Tossed Light Green	Cut TWO (2) 6 1/2" squares
Ornaments Gold	Cut FOUR (4) 3 1/2" squares
Gingham Red	Cut FOUR (4) 3 1/2" squares



Invite a Moose
to Christmas
Block 2

Cutting for the "Invite a Moose to Christmas" Block 2 - make TWO (2) for this Block Set:

Fabric	Cuts
Poinsettia Tossed Light Green	Cut ONE (1) 6 1/2" square
Moose Heads Green	Cut FOUR (4) 3 1/2" squares
Ornaments Gold	Cut FOUR (4) 3 1/2" squares
Gingham Red	Cut FOUR (4) 3 1/2" squares



Buy Your Fabric from AbbiMays.com!



This pattern has been tested, to the best of our ability. If your block does not come out the size shown, please try adjusting your needle position to the appropriate position (left or right) and see if you get the correct block size.

© 2017 BOMQuilts.com - All Rights Reserved
For Personal Use ONLY

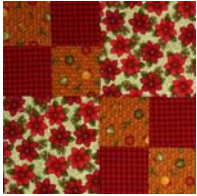
"Invite a Moose to Christmas"
 2017 Free "Christmas in July" Quilt Project
 from BOMQuilts.com & AbbiMays.com

Christmas in July 2017
 at [BOMquilts.com!](http://BOMquilts.com)

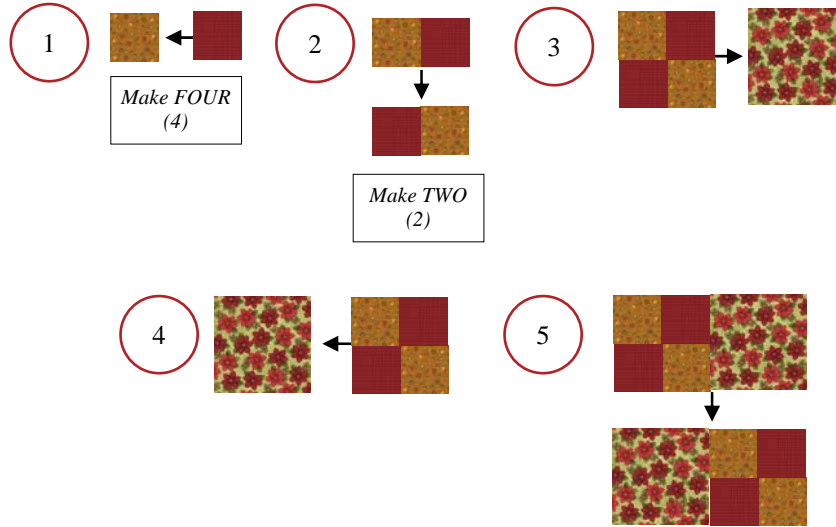
Click Here



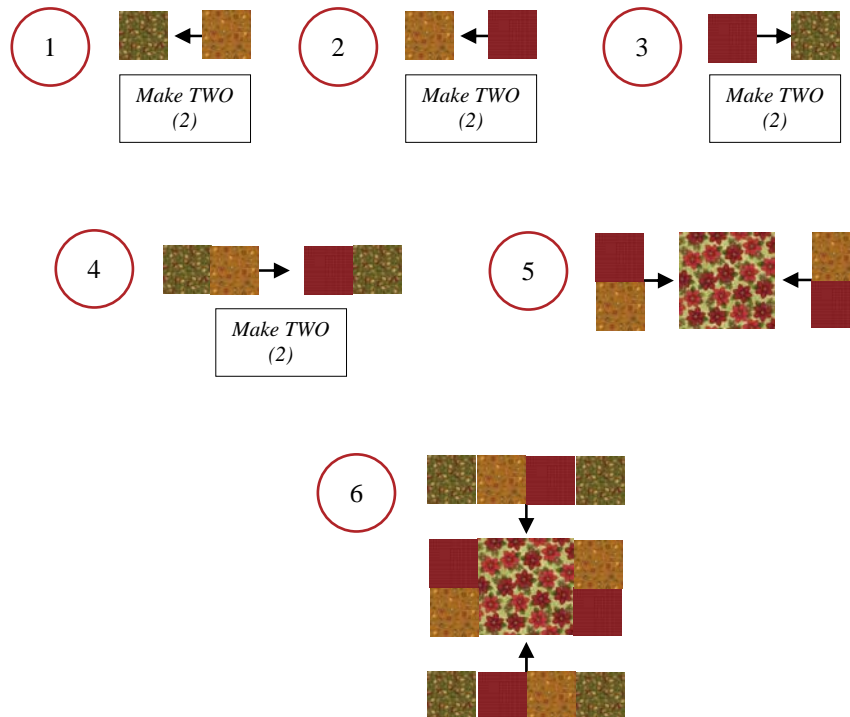
Free original quilt patterns &
 projects each week in July!



Invite a Moose to Christmas
 Block 1
 Make TWO (2)



Invite a Moose to Christmas
 Block 2
 Make TWO (2)



Buy Your Fabric from [AbbiMays.com!](http://AbbiMays.com)



"Invite a Moose to Christmas"

2017 Free "Christmas in July" Quilt Project
from BOMQuilts.com & AbbiMays.com



Christmas in July 2017
at BOMquilts.com!

Free original quilt patterns &
projects each week in July!

Click Here

If you are JUST making the design set, you do NOT need to cut the third fabric on the table below (Jolly Holly Black). Once your quilt top is finished, configure the final border based on the size of your finished quilt project.

Final Cutting for the Invite a Moose to Christmas Block Set:

Fabric	Cuts
Jolly Holly Black	Cut TWO (2) 1" x WOF strips for Sashing - with these strips, cut FOUR (4) 1" x 12 1/2" strips
Ornaments Gold	Cut ONE (1) 1" square
Jolly Holly Black	Cut THREE (3) 2" x WOF strips for Border, with these strips: (1) Cut TWO (2) 2" x 24 1/2" strips for the top & bottom Borders. (2) Cut & piece TWO (2) 2" x 27 1/2" strips for left & right Borders.



Now, create your quilt sandwich with your quilt top, batting and backing then quilt as desired and add your binding.

Congratulations from BOMquilts.com and AbbiMays.com!

See the Introduction page for the fabric requirements needed for the quilt project size of your choice.



Buy Your Fabric from AbbiMays.com!



This pattern has been tested, to the best of our ability. If your block does not come out the size shown, please try adjusting your needle position to the appropriate position (left or right) and see if you get the correct block size.

© 2017 BOMQuilts.com - All Rights Reserved
For Personal Use ONLY