

TT Mistletoe In The Corner Quilt

A Mistletoe Mooch Just in Time for Christmas!

2006 BOM Quilt from BOMQuilts.com & AbbiMays.com



Block 7- Hourglasses in the Corner

November 15, 2006

8" block = 33" x 33" finished wall hanging
12" block = 53" x 53" finished lap quilt

NOTE: We are not going to tell you what specific fabrics to use, we want to let your creative juices flow! We will use the following fabric names for the cuts -- brown, red, cream, peach & green from the "Mistletoe Manor" fabric line by 3 Sisters for Moda Fabrics.

Cutting Instructions for 8" blocks

Fabric	Cut 1	Cut 2
Red	Cut one (1) 8 7/8" x 8 7/8" square ----- Cut two (2) 3 1/4" x 3 1/4" squares	Cut the large square diagonally from corner to corner, leaving you with 2 triangles (you only need 1 of these triangles for this block, save the other for another block) -----
Green	Cut two (2) 2 1/2" x 2 1/2" squares	
Cream	Cut two (2) 3 1/4" x 3 1/4" squares	Draw a diagonal line, corner to corner, once on the back of your cream squares
Peach	Cut ONE (1) 4 7/8" x 4 7/8" squares	Cut square diagonally from corner to corner, leaving you with 2 triangles

Cutting Instructions for 12" blocks

Fabric	Cut 1	Cut 2
Red	Cut one (1) 12 7/8" x 12 7/8" square ----- Cut two (2) 4 1/4" x 4 1/4" squares	Cut the large square diagonally from corner to corner, leaving you with 2 triangles (you only need 1 of these triangles for this block, save the other for another block) -----
Green	Cut two (2) 3 1/2" x 3 1/2" squares	
Cream	Cut two (2) 4 1/4" x 4 1/4" squares	Draw a diagonal line, corner to corner, once on the back of your cream squares
Peach	Cut one (1) 6 7/8" x 6 7/8" square	Cut square diagonally from corner to corner, leaving you with 2 triangles

TT Mistletoe In The Corner Quilt

A Mistletoe Mooch Just in Time for Christmas!

2006 BOM Quilt from BOMQuilts.com & AbbiMays.com



Block 7- Hourglasses in the Corner

November 15, 2006

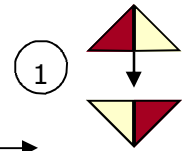
8" block = 33" x 33" finished wall hanging
12" block = 53" x 53" finished lap quilt

NOTE: We are not going to tell you what specific fabrics to use, we want to let your creative juices flow! We will use the following fabric names for the cuts -- brown, red, cream, peach & green from the "Mistletoe Manor" fabric line by 3 Sisters for Moda Fabrics.

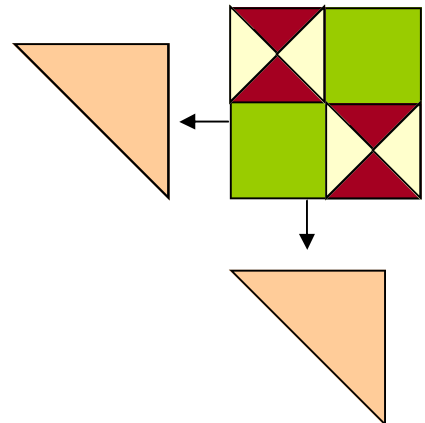
Piecing Instructions for Blocks

(all seams 1/4")

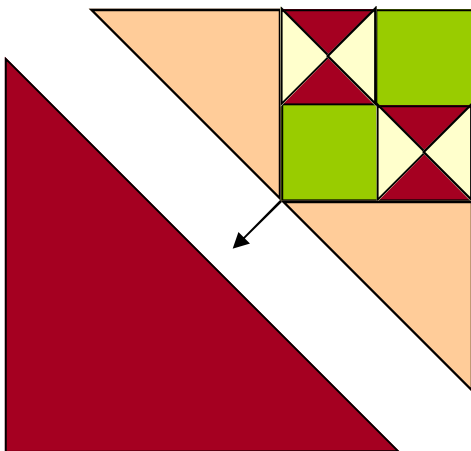
1) With right sides together, sew your cream squares to your red squares 1/4" on EACH SIDE of the diagonal line. Once done, cut the blocks from corner to corner OPPOSITE of the diagonal line you drew and press each toward the red fabric. You will end up with FOUR (4) triangles. Sew these together, as shown:



2) Sew the quarter-square triangle blocks to the green squares, as shown, pressing towards the green squares:



4) Finally, sew your red triangle to your Mistletoe in the Corner triangle, pressing towards the large red triangle.



**Good Job! Now, you're ready
for Block 8!**